



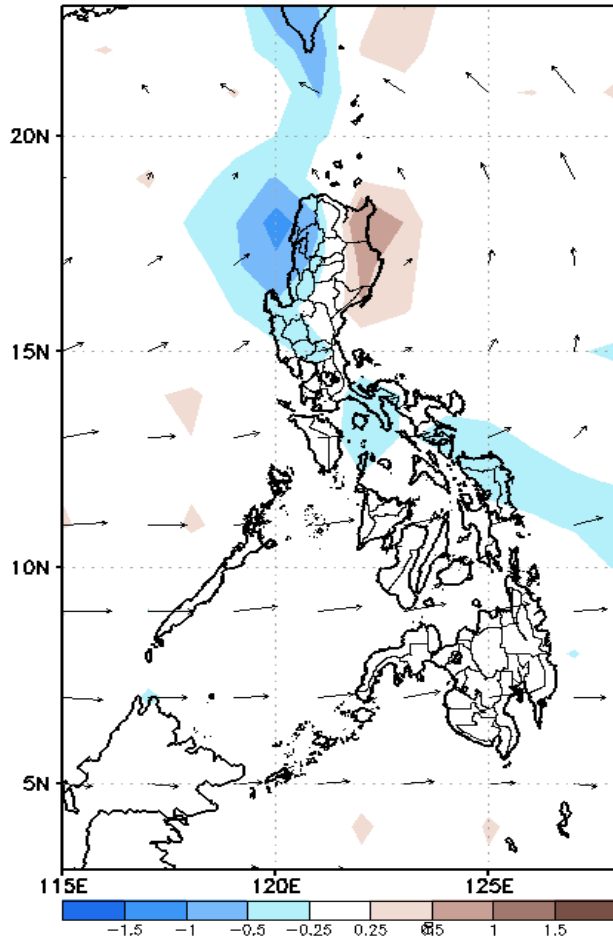
Week 1 & Week 2 Forecast for the Philippines using GEFS Model



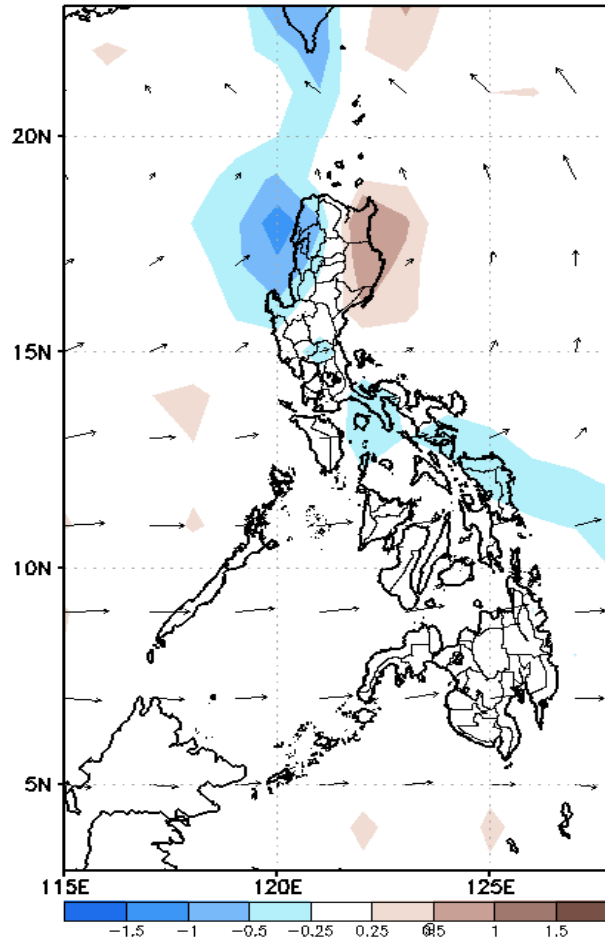
GEFS Week-1 Forecasts: Divergence & Wind Anomaly

Week 1: Nov 05-11, 2020

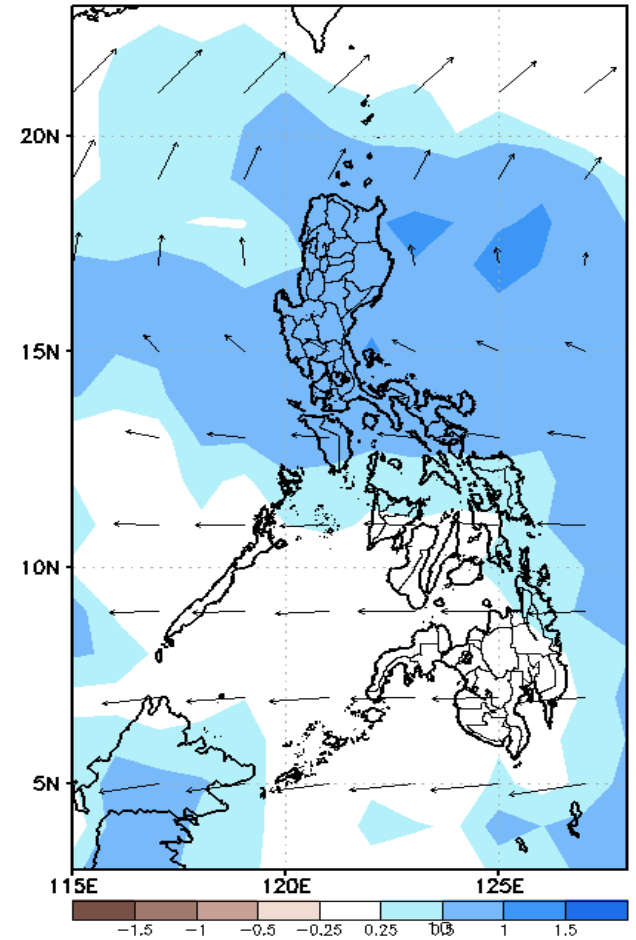
GEFS Week-1 850-hPa Divergence and Wind Anom
Valid: 20201105 - 20201111



GEFS Week-1 700-hPa Divergence and Wind Anom
Valid: 20201105 - 20201111



GEFS Week-1 200-hPa Divergence and Wind Anom
Valid: 20201105 - 20201111



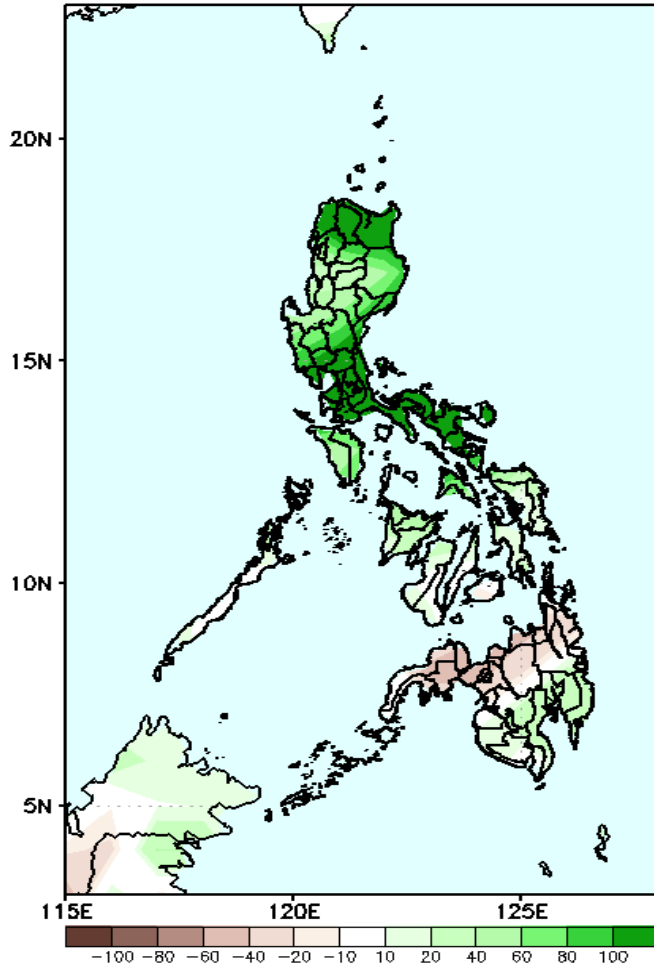
Upper level (200hPa) Divergence suggest likelihood of precipitation in most parts of Luzon and Samar provinces. Northeast windflow affecting northern Luzon while easterlies affecting the remaining the rest of the during the forecast period.



Precipitation Anomaly and Exceedance Probability > 25/50 mm

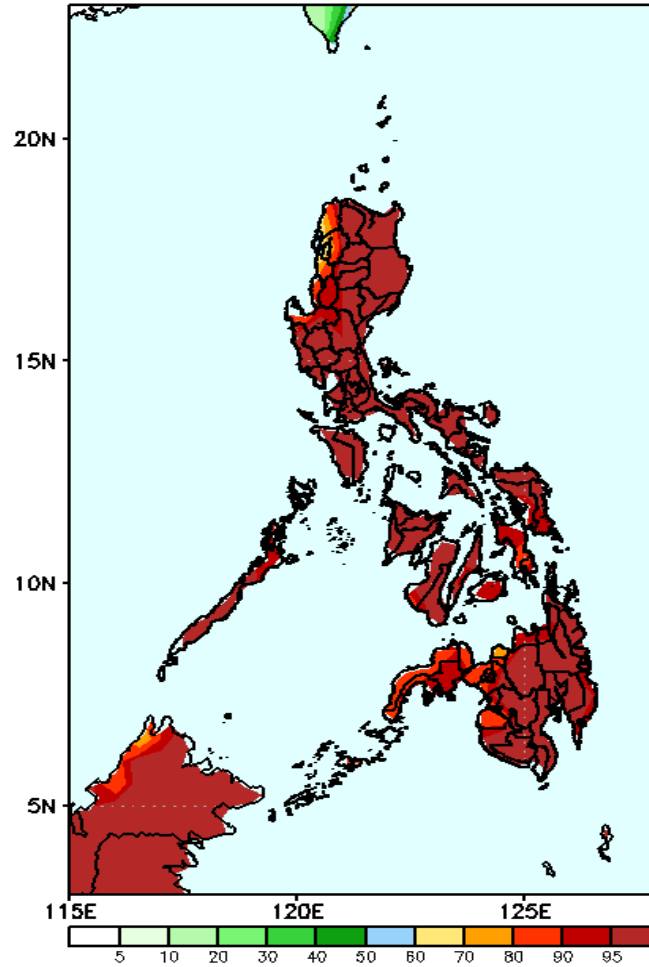
Week 1: Nov 05-11, 2020

GEFS Week-1 Precip Anomaly
Valid: 20201105 - 20201111



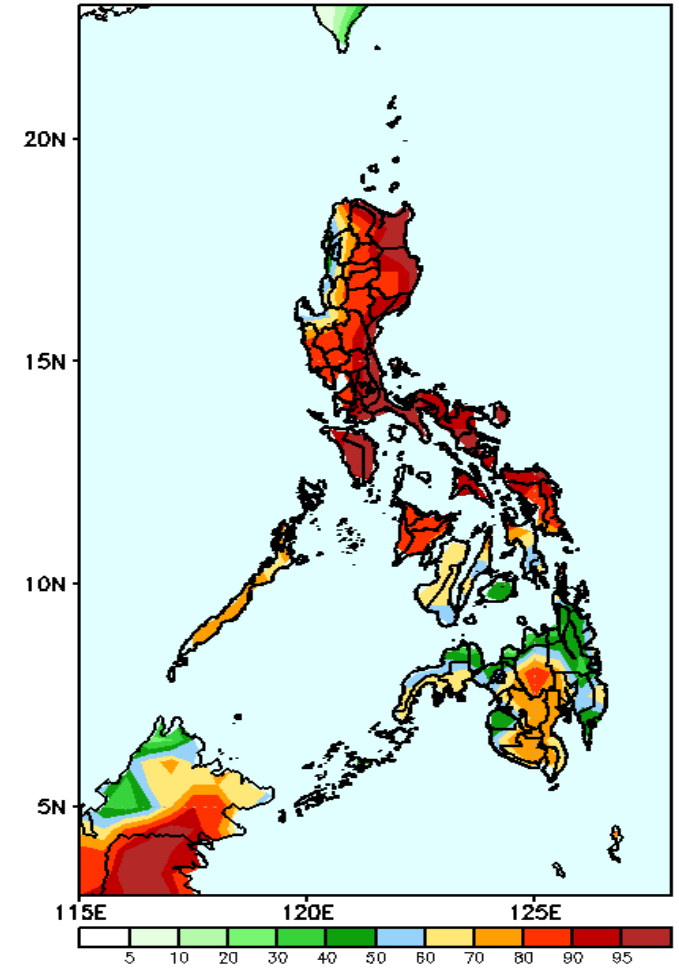
Increase of rainfall of more than 100mm in most parts of Luzon is expected while rainfall deficit of up to 40mm in northern Mindanao during the forecast period.

GEFS Week-1 Exceedance Prob. > 25mm
Valid: 20201105 - 20201111



High probability of rainfall to exceed 25mm in most parts of the country is expected during the forecast period.

GEFS Week-1 Exceedance Prob. > 50mm
Valid: 20201105 - 20201111



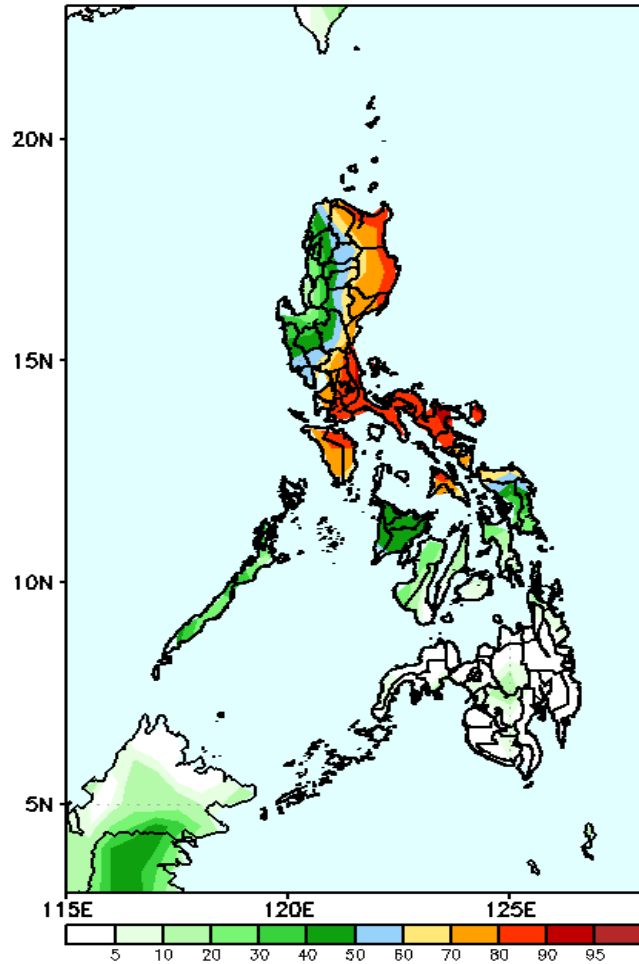
High probability of rainfall to exceed 50mm in most parts of the country except in northwestern and eastern parts of Mindanao during the forecast period.



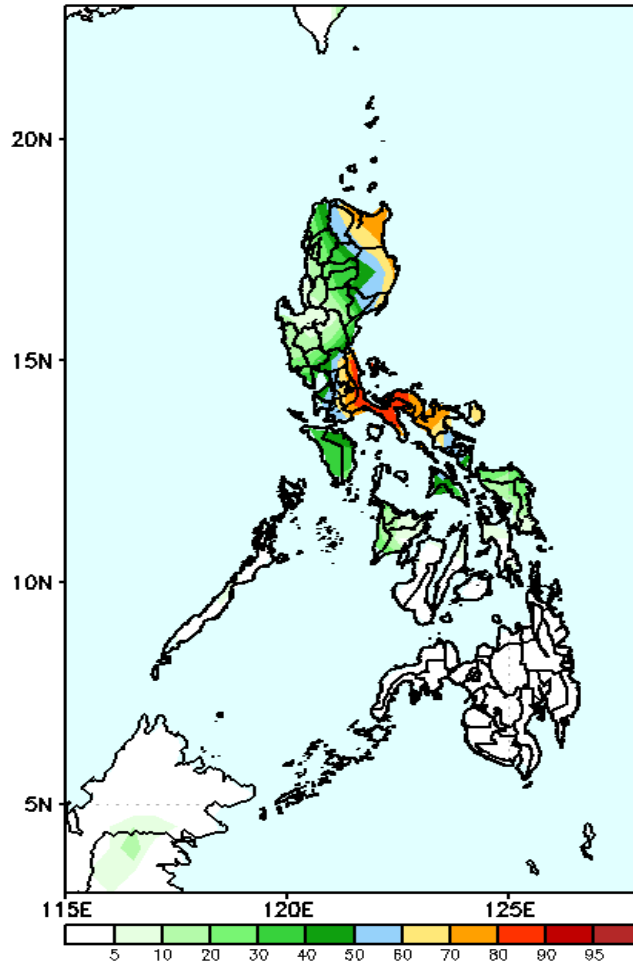
Exceedance Probability > 100/150/200 mm

Week 1: Nov 05-11, 2020

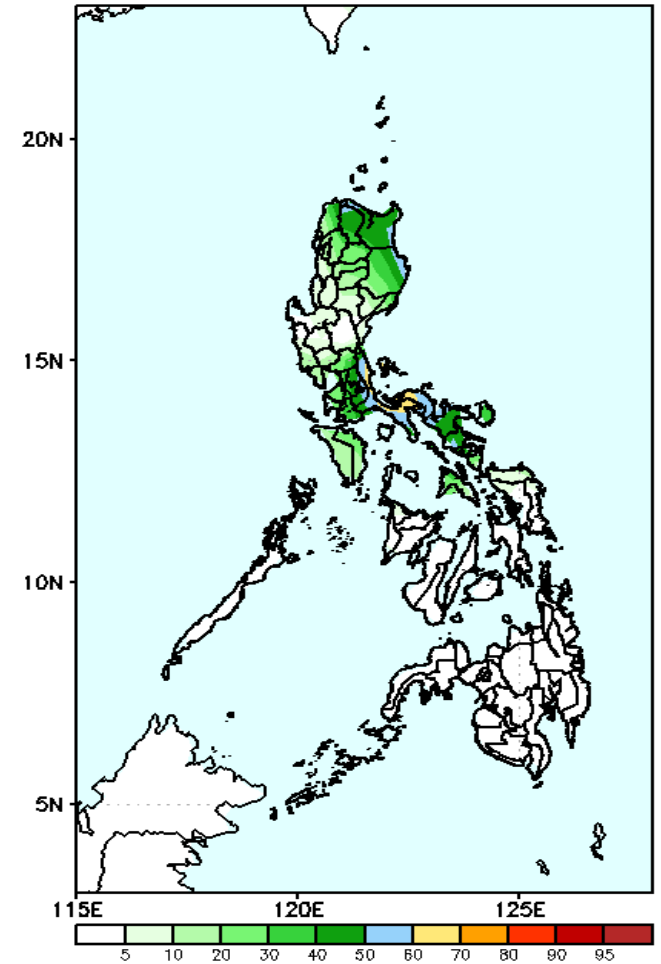
GEFS Week-1 Exceedance Prob. > 100mm
Valid: 20201105 - 20201111



GEFS Week-1 Exceedance Prob. > 150mm
Valid: 20201105 - 20201111



GEFS Week-1 Exceedance Prob. > 200mm
Valid: 20201105 - 20201111



High probability of rainfall to exceed 100mm in most parts of eastern and southern Luzon, Bicol Region, Mindoro and Masbate while less likely for the rest of the country during the forecast period.

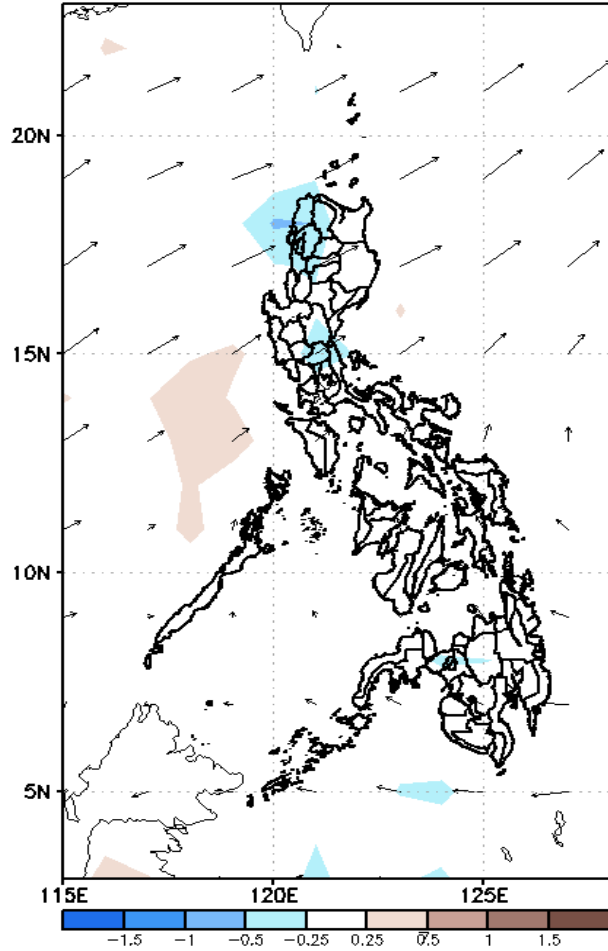
High probability of rainfall to exceed 150mm in Cagayan, Isabela, Rizal, Quezon and Bicol Region while less likely for the rest of the country during the forecast period.

Less probability of rainfall to exceed 200mm in most parts of the country during the forecast period.

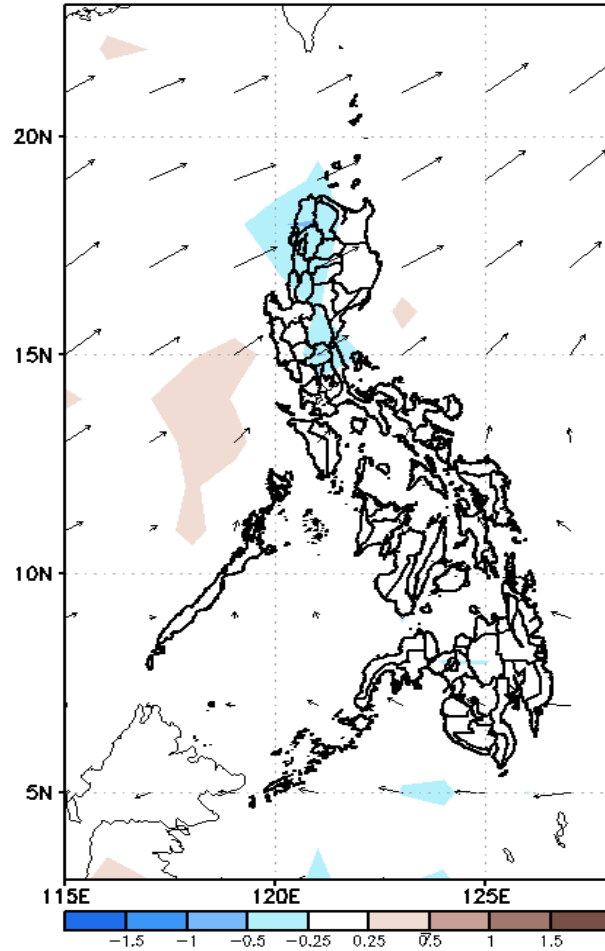
GEFS Week-2 Forecasts: Divergence & Wind Anomaly

Week 2: Nov 12-18, 2020

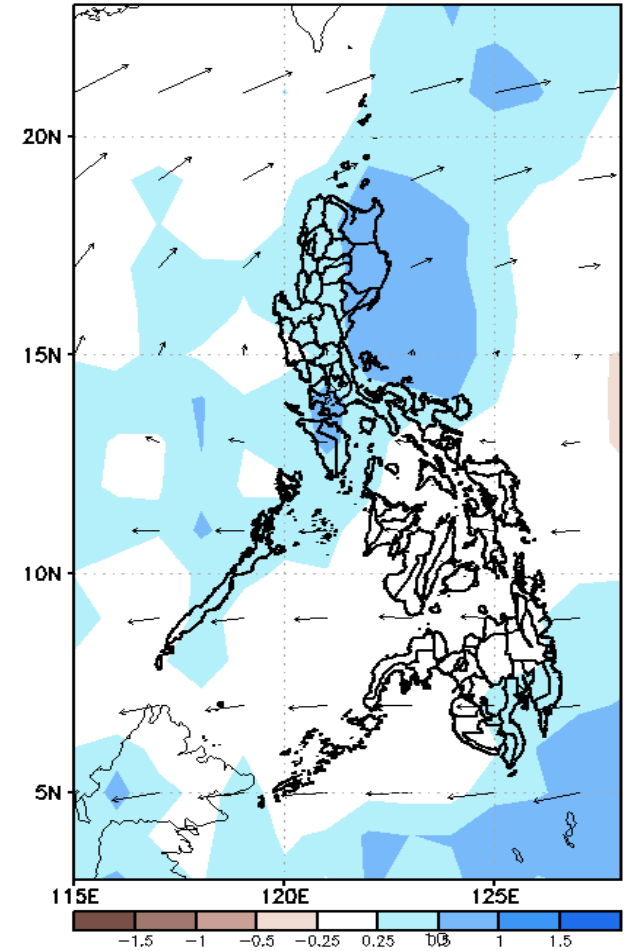
GEFS Week-2 850-hPa Divergence and Wind Anom
Valid: 20201112 - 20201118



GEFS Week-2 700-hPa Divergence and Wind Anom
Valid: 20201112 - 20201118



GEFS week-2 200-hPa Divergence and Wind Anom
Valid: 20201112 - 20201118

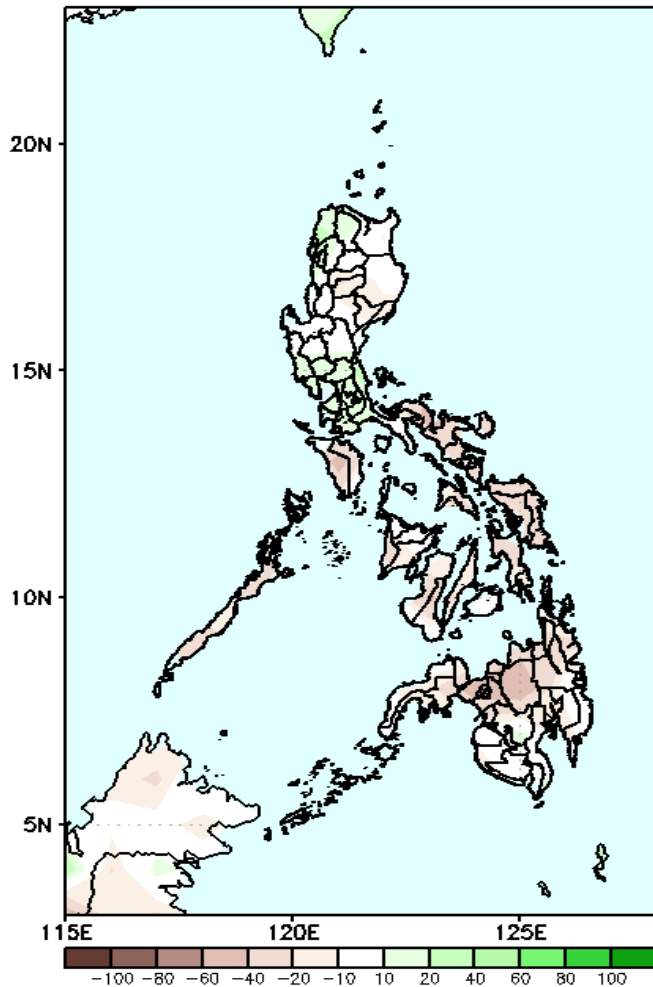


Upper level (200hPa) Divergence suggest likelihood of precipitation in most parts of Luzon and Davao Region. Northeast affecting northern and eastern Luzon while easterlies affecting the rest of the country during the forecast period.

Precipitation Anomaly and Exceedance Probability > 25/50 mm

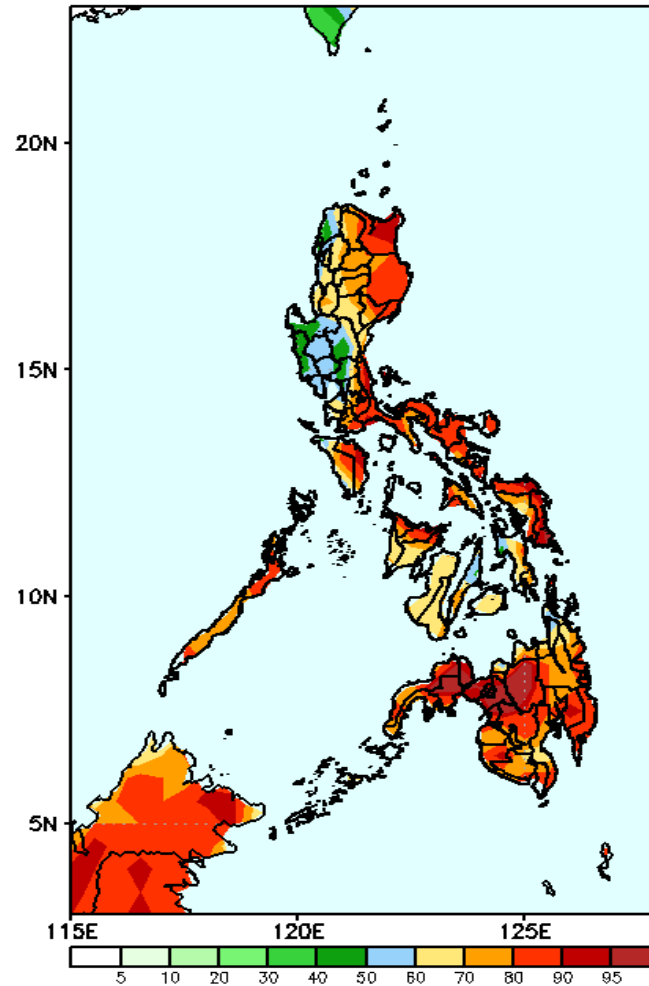
Week 2: Nov 12-18, 2020

GEFS Week-2 Precip Anomaly
Valid: 20201112 - 20201118



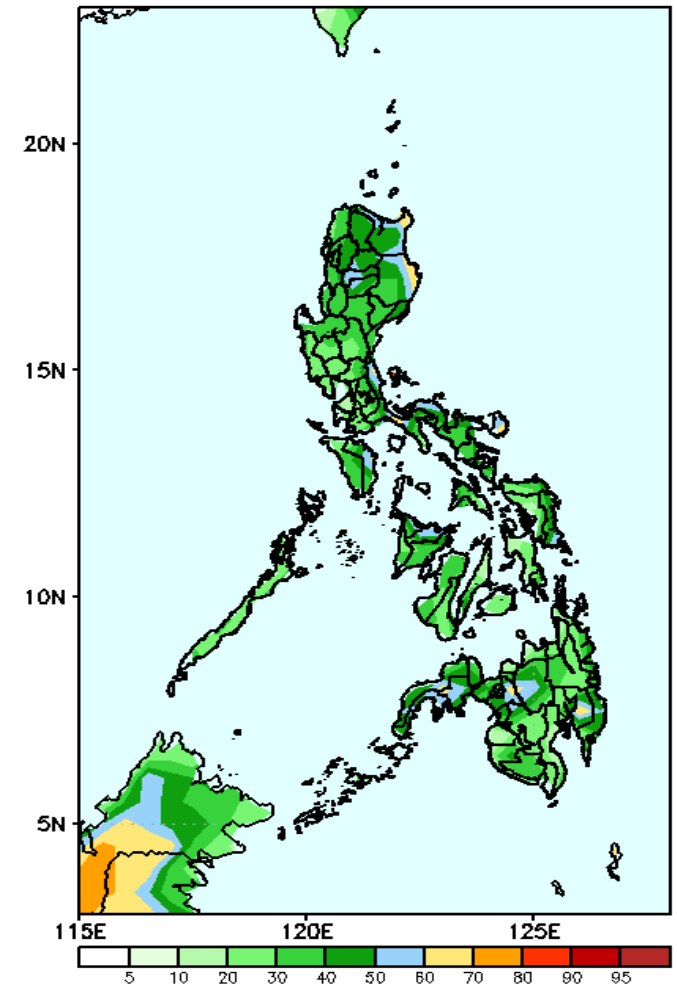
Rainfall deficit of up to 40mm in most parts of the country is expected during the forecast period.

GEFS Week-2 Exceedance Prob. > 25mm
Valid: 20201112 - 20201118



High probability of rainfall to exceed 25mm in most parts of the country is expected during the forecast period.

GEFS Week-2 Exceedance Prob. > 50mm
Valid: 20201112 - 20201118

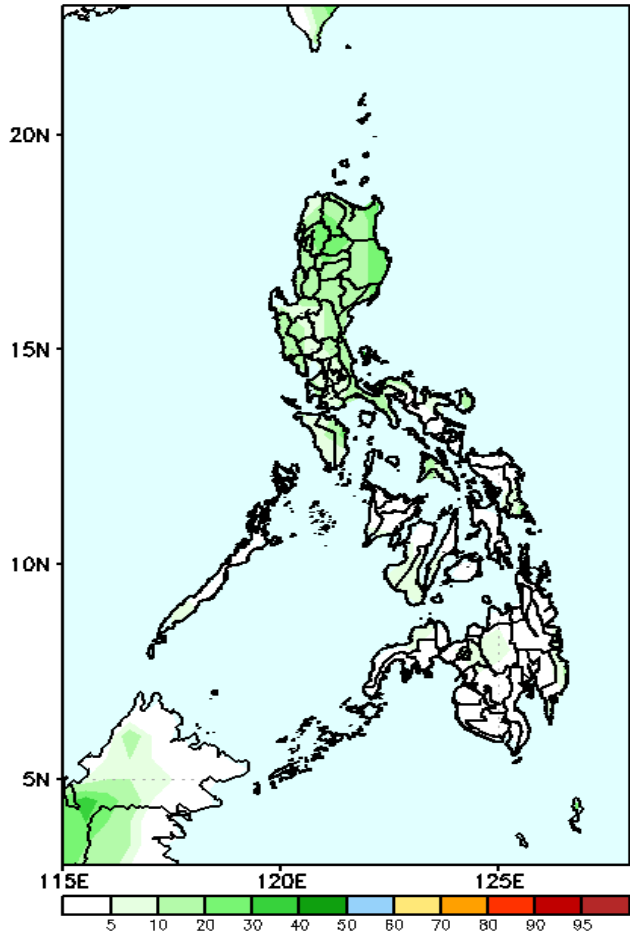


50-65% probability of rainfall to exceed 50mm in most parts of the country is expected during the forecast period.

Exceedance Probability > 100/150/200 mm

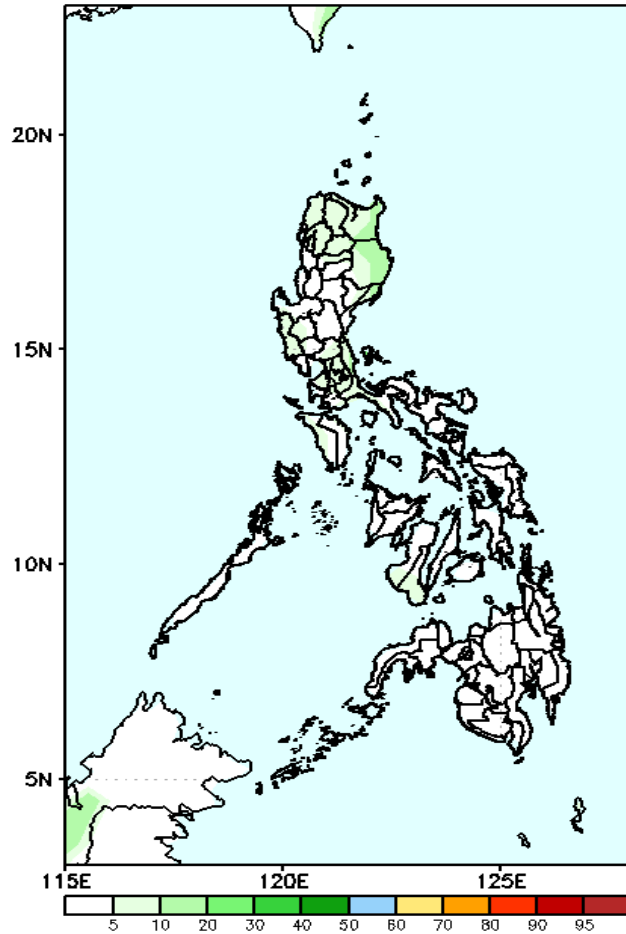
Week 2: Nov 12-18, 2020

GEFS Week-2 Exceedance Prob. > 100mm
Valid: 20201112 - 20201118



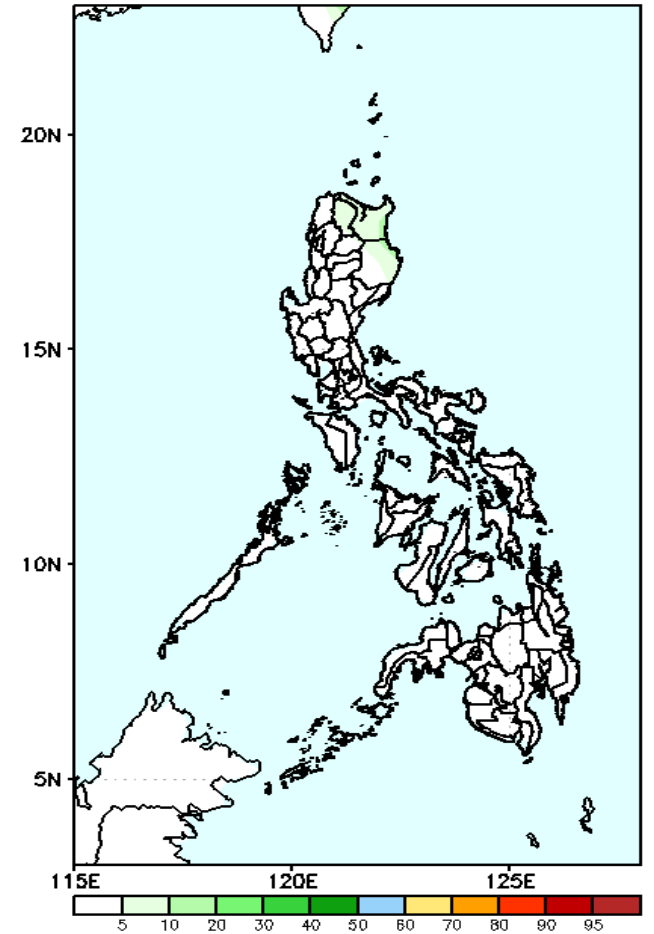
Less probability of rainfall to exceed 100mm in most parts of the country during the forecast period.

GEFS Week-2 Exceedance Prob. > 150mm
Valid: 20201112 - 20201118



Less probability of rainfall to exceed 150mm in most parts of the country during the forecast period.

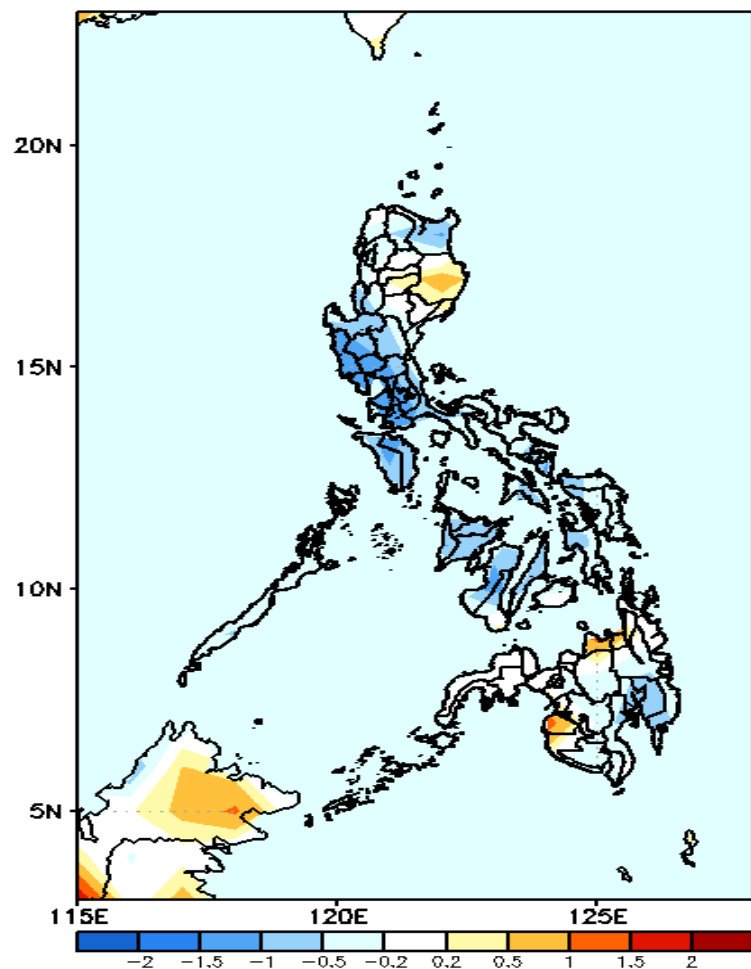
GEFS Week-2 Exceedance Prob. > 200mm
Valid: 20201112 - 20201118



Less probability of rainfall to exceed 200mm in most parts of the country during the forecast period.

GEFS Week-1 & 2 Forecasts: T2m Anomaly

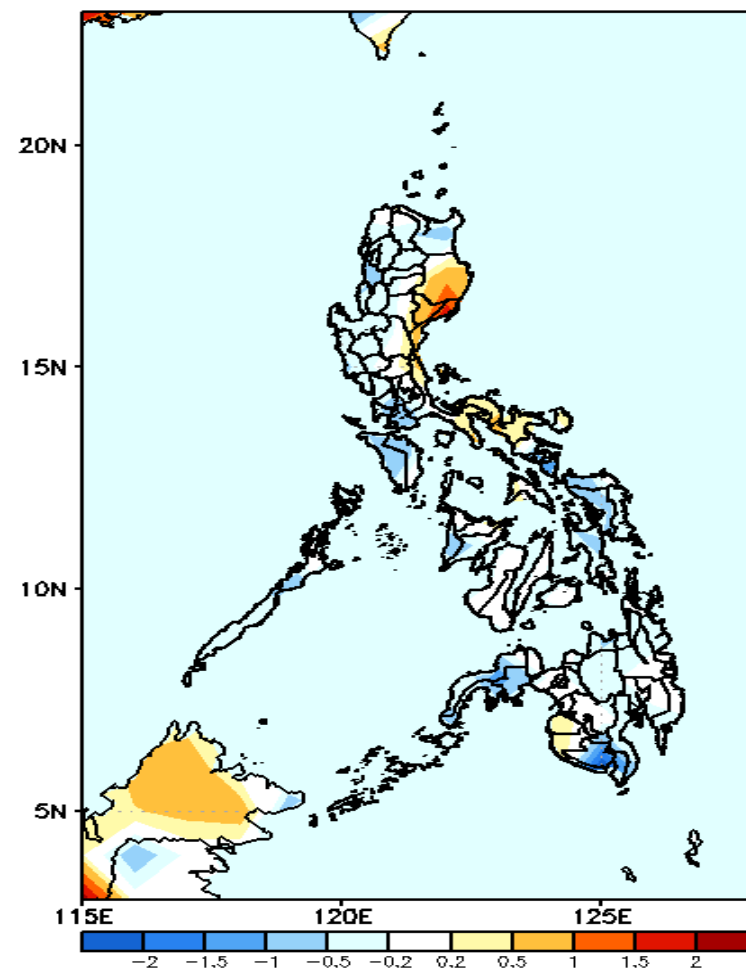
GEFS Week-1 T2m Anomaly
Valid: 20201105 - 20201111



2m Temperature Week 1: Nov 05-11, 2020

Slightly cooler to cooler than average surface air temperature is expected in most parts of the country except in CAR, Isabela and northern and western Mindanao where average to slightly warmer temperature will likely experience.

GEFS Week-2 T2m Anomaly
Valid: 20201112 - 20201118



2m Temperature Week 2: Nov 12-18, 2020

Average to slightly cooler than average surface air temperature is expected in most parts of the country except in Isabela, Quirino, Aurora and Bicol Region where slightly warmer temperature will likely experience.

